

# Wondergraze



Wondergraze jumps away in the seedling stage

Wondergraze combines the best features of all the other commercial varieties.

Its key advantages are:-

- it has consistently outperformed Cunningham and Peru for forage yield;
- it has excellent seedling vigour similar to Tarramba;
- it is shorter and more bushy than Tarramba; and
- like Tarramba, it is more tolerant of psyllid attack and cold weather than Cunningham and Peru. Wondergraze will start regrowing quickly in spring if soil moisture is available.



6 month old Wondergraze



3 month old Wondergraze Injune®

The agronomy of **WONDERGRAZE** is similar to that of other leucaena varieties. Always keep leucaena weed free until it reaches 2 metres tall which should occur within 6 months from planting. Seed is hard and must be machine scarified to enable uniform, rapid germination and good seedling vigour. In our service to growers, Leucseeds Pty. Ltd. markets **WONDERGRAZE** seed and provides (inclusive of price):-

- carefully scarified seed in 20 kg lots;
- seed sealed in metal pails to protect the scarified seed from ageing;
- specific rhizobium inoculant required for nitrogen fixation; and
- freight to all destinations within Australia.



16 month old Wondergraze for seed production at Biloela



Wondergraze branching at ground level

When **WONDERGRAZE** is ready for grazing always insure the rumen bacteria *Synergistes jonesii* is present in the herd. Graziers should feed leucaena for 2 weeks prior to first inoculating their cattle with *S. jonesii* to insure successful colonization of the rumen by the bacteria. Never allow starving stock to gorge pure leucaena.

(The technical information in this brochure has been collected from trial work done at Waimanalo Research Station in Hawaii and in southeast Queensland, Australia).

**NITROGEN IS PROTEIN IS BEEF**



2 year old Wondergraze with buffel grass

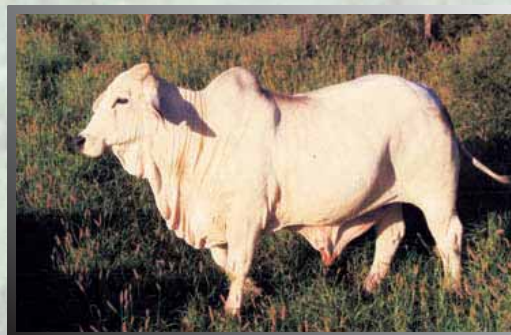
When we discovered leucaena over 25 years ago we realised its magnificent potential as a high quality cattle feed and soil fertility builder. It has performed beyond our expectations and indeed is too good to keep to ourselves. My family and I are most happy to host you on a guided tour of our property (by prior arrangement) to inspect WONDERGRAZE so that you also may catch a vision of how this wonderful plant can improve the quality and profitability of your cattle operation.



Peter and Tim Larsen



Wondergraze seed supplied in 20 kg lots scarified immediately prior to packing in sealed pails



Cattle grazing leucaena are always marketable



### "CEDARS PARK"

Banana, 4702, Queensland, Australia

Telephone: Peter & Jan (07) 4995 7228; Tim & Rhyll (07) 4995 7287

Facsimile: (07) 4995 7228

International Phone & Fax 61 7 4995 7228

Email: leucseeds@bigpond.com



*leucaena leucocephala ssp. glabrata cv.*

# Wondergraze

Wondergraze is a new hybrid leucaena and seed is now available for planting. Wondergraze will provide considerable benefits in 600-800 mm rainfall environments, where Tarramba, Cunningham and Peru are currently planted. Wondergraze is an exciting new opportunity for the leucaena industry.

#### Wondergraze:-

- has superior psyllid tolerance and significantly out-yields Cunningham and Peru;
- has superior branching to Tarramba and has a bushy form ideal for grazing;
- grows later into autumn and responds earlier in spring than Cunningham and Peru;
- is exceptionally high in protein and minerals essential for animal growth;
- is highly digestible with bypass protein and does not cause bloat;
- remains green throughout the year (except in severely frosted areas); and
- is capable of giving live weight gains in excess of 1 kg/day.

Wondergraze was bred by Professor James Brewbaker at the University of Hawaii in the late 1980's. *Leucaena leucocephala ssp. glabrata cv. Wondergraze* is an intraspecific hybrid between K636 x K584. It was imported into Australia through quarantine in the early 1990's. In collaboration with Prof. Brewbaker, it underwent 20 years of agronomic and forage quality testing to satisfy the Australian Plant Breeders Rights Office requirements for certification. The exclusive rights to market the variety were granted on 2nd March 2010, and expire on 2nd March 2035, to Leucseeds Pty. Ltd., "Cedars Park", Norths Road, BANANA, QUEENSLAND, AUSTRALIA.



Jan Larsen inspecting leucaena hybrids, Hawaii, 1990

## DNA profiled for PBR protection



Unauthorised commercial propagation or any sale, conditioning, export import or stocking of propagating material of this variety is an infringement under the Plant Breeder's Rights Act 1994

